

**jb lashes**

LASHFOOD | EYELASH  
ENHANCER



**LASHFOOD PHYTO-MEDIC EYELASH ENHANCING SERUM**

**DIGITAL MARKETING KIT**

# SEE RESULTS, NOT SIDE EFFECTS



## In Our Study

85%

reported a visible improvement in eyelash fullness and texture

100%

reported an impressive increase in eyelash length

100%

reported an attractive increase in eyelash thickness and density

100%

would happily recommend the enhancer and other If products to others

0%

noticed irritation

## Results Timeline

LASHFOOD

**week 1**

officially starting my LASHFOOD journey!

**week 4**

new lashes coming through!

**week 12**

feeling stronger, looking fuller

**week 14**

can't stop, won't stop!

**week 16**

are those false lashes?



## product information

### Key Ingredients

**Phyto-Medic Complex** Revolutionary medicinal herb extracts demonstrated to reinforce and boost lash condition.

**Peony Root Complex** Essential peony nutrition to revitalize and rejuvenate skin

**Adenosine** Bio-ingredient that promotes the ideal environment for optimal lash growth

**Rice Protein** Strengthens and expands the diameter of lash follicles to create noticeably thicker and stronger looking lashes

**Lavender Water** Helps with a variety of hair problems including alopecia

### How to Use

1. Apply nightly after cleansing and drying your face.
2. Sweep applicator brush along the lash line in the same manner as liquid eyeliner.
3. Allow one to two minutes for serum to dry.
4. Use consistently for best results.



CLINICALLY  
TESTED



VEGAN  
FRIENDLY



PLASTIC  
NEUTRAL



NO SYNTHETIC  
FRAGRANCES



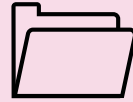
NO PARABENS  
OR HORMONES



DERMATOLOGIST  
TESTED & APPROVED



CRUELTY  
FREE



**digital assets**



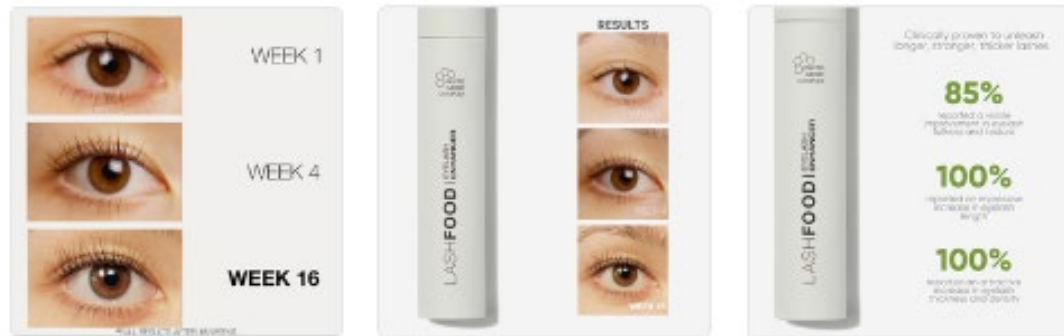
## stylized photography library



Here are some digital assets you can post on your Instagram feed to promote LASHFOOD Eyelash Enhancing Serum!

# instagram in-feed creative

## IG in-feed package 1



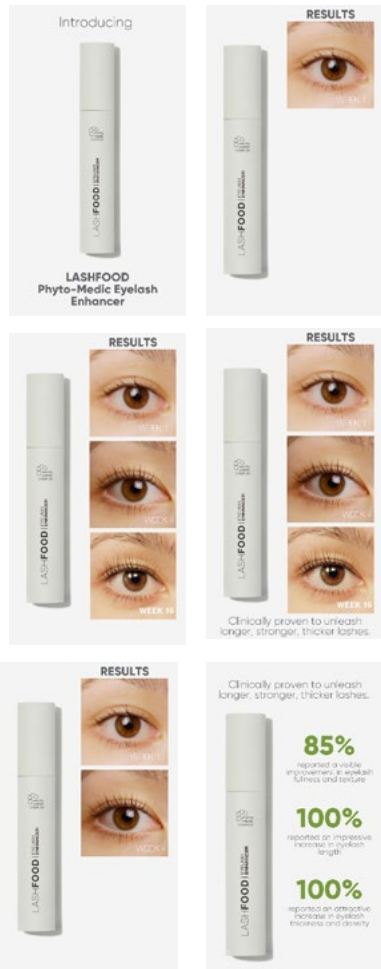
## IG in-feed package 2



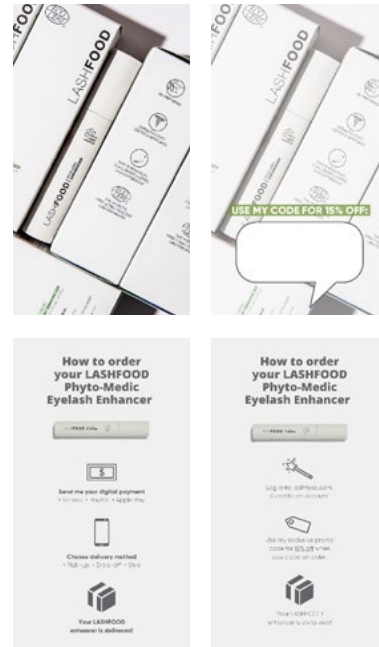
Here are some digital assets you can post on your instagram feed to promote LASHFOOD Eyelash Enhancing Serum!

# instagram stories creative

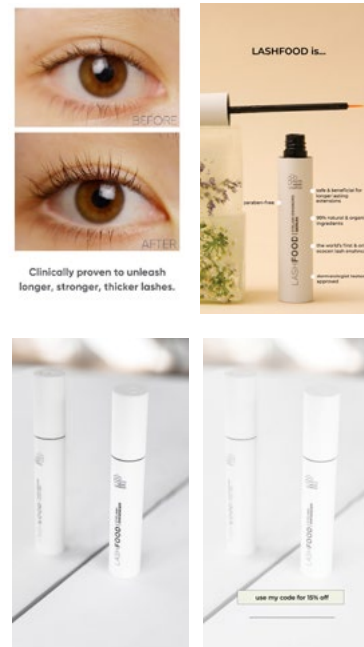
## Package 1



## Package 2



## Package 3



## Giphy Stickers



Search "LASHFOOD" in IG stories gifs to use our branded stickers!

Here are some digital assets you can use on your instagram stories to promote LASHFOOD Eyelash Enhancing Serum!

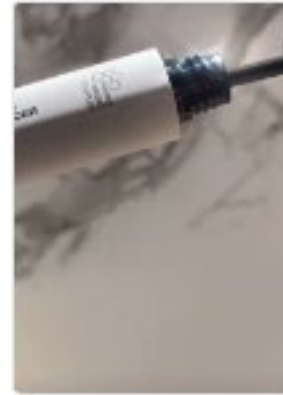
## instagram reels/tiktok creative



[click here to view](#)



[click here to view](#)



[click here to view](#)



[click here to view](#)

Here are some digital assets you can use on your instagram to promote LASHFOOD Eyelash Enhancing Serum!



## email creative

LASHFOOD

JUST



STOCKED!

SHOP NOW


LASHFOOD



Longer, thicker, stronger natural lashes  
in as little as 6 weeks

SHOP NOW

THE REVIEWS ARE IN



The Lash Enhancing Serum That Really works  
See longer, thicker, stronger looking lashes in just 6 weeks  
Strengthen frail, brittle lashes  
Only results, none of the side effects

ENHANCE YOUR LASHES

Here are some digital assets you can use on your email to promote LASHFOOD Eyelash Enhancing Serum!

## FAQ

### **What is ECOCERT?**

ECOCERT is the largest organic certification organizations in the world. It ensures that the product is a plant based certified organic, containing no parabens, no synthetic dyes or synthetic alcohol.

### **How frequently should I apply Phyto-Medic Eyelash Enhancing Serum?**

We recommend nightly application in order to see desired results.

### **How do I apply Phyto-Medic Eyelash Enhancing Serum?**

Apply nightly onto a clear dry face (at the end of your skin care routine). Swipe across your lid as you would a liquid eyeliner. Wait 2-3 seconds for it to dry.

### **Can this product be used with eyelash extensions?**

Yes it can! LASHFOOD makes your natural lashes stronger and fuller thus elongating the retention time. With stronger fuller brows clients can also support thicker eyelash extensions thus creating a more dramatic glue.

### **How long does one tube of the Phyto-Medic Eyelash Enhancing Serum last?**

Each bottle is a 3 month supply.

### **Are LASHFOOD products gluten free?**

Yes they are.

### **How long until I can expect results?**

You should start to see initial results within 4 weeks of daily use and full results within 16 weeks.

### **Is LASHFOOD safe to use while pregnant or while nursing?**

While we have never heard of any instances where it was an issue, we always recommend consulting your physician before starting a new regimen.

### **What is in LASHFOOD that makes your lashes longer?**

Our Phyto-Medic complex includes powerful plants from around the world that include lavender water, peony root complex, rice protein and arginine to name a few.